



*Worldwide Leader in
Steaming Equipment Since 1940*

Esteam® and J-Series
OWNER'S MANUAL

Congratulations and Thank You!

Thank you for purchasing your Jiffy® Steamer from the world's leading manufacturer of steaming equipment since 1940. We strive to engineer and manufacture the very best

steamer available backed by superior customer service.

With proper maintenance and cleaning, your Jiffy® Steamer will last through years of demanding use. Thank you again and we sincerely appreciate your business.



Warmest regards,
Jiffy® Steamer Company, LLC
Made in the USA Since 1940

Table of Contents

Safety Instructions	3
How to Steam.....	4
Esteam® Hand Held Steamer	5-8
Rod Set Assembly	9
Model J-1, J-2 & J-200 Jiffy® Steamers	10-15
Model J-2000 Jiffy® Steamer.....	16-21
Model J-4000 Jiffy® Steamer.....	22-27
Model J-1, J-2, J-200 & J-2000 Jiffy® Steamers Cleaning Instructions.....	28
Model J-4000 Jiffy® Steamer Cleaning Instructions.....	29
Jiffy® Steamer Maintenance.....	30
Jiffy® Steamer Accessories.....	31
Jiffy® Steamer Steam Head Configurations.....	32
Jiffy® Steamer Cord Plug Configurations.....	33
Troubleshooting	34-35
Jiffy® Matrix Charts	36-39
Product Specifications	40
Jiffy® Steamer Warranty & Return Policy	41
Jiffy® Steamer Extended Warranty	42

Jiffy® Steamer Safety Instructions

When using your Jiffy® Steamer, basic precautions should always be followed, including the following:

1. Read all instructions prior to usage.
2. To reduce the risk of contact with hot water emitting from steam vents, check appliance before each use by holding it away from body and operating.
3. Use appliance only for its intended use. Steam only in an up and down vertical motion. Never use steamer in a horizontal position or tilt into a backward position, this may result in water discharge.
4. To avoid the risk of electric shock, do not immerse the appliance in water or other liquids.
5. Never tug cord to disconnect from outlet; instead grasp plug and pull to disconnect.
6. Do not allow cord to touch hot surfaces. Let appliance cool completely before storing.
7. Always disconnect appliance from electrical outlet when filling with water, emptying, and when not in use.
8. Do not operate appliance with a damaged cord, or if the appliance has been dropped or damaged. To reduce the risk of electric shock, do not disassemble or attempt to repair the appliance, take it to a qualified service person or return to the Jiffy® Steamer factory for examination and repair. Incorrect reassembly or repair could cause a risk of fire, electric shock or injury to persons when the appliance is used.
9. Close supervision is necessary for any appliance being used by or near children. Do not leave appliance unattended while connected to power source.
10. Burns could occur from touching hot parts, hot water or steam. Use care when you empty a steam appliance as there may be hot water in the reservoir.
11. Indoor use only.
12. Never attempt to steam clothing while on body.

SAVE THESE INSTRUCTIONS



**RISK OF
ELECTRIC
SHOCK**



**RISK OF
BURNS**

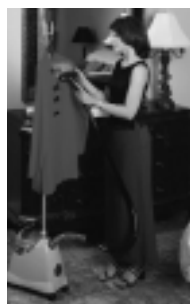
How to Steam

As your drycleaner knows, steam is the gentlest, safest, most efficient method to remove wrinkles. Not only is steaming five times faster than ironing, it is guaranteed not to scorch even the most delicate materials and fabrics. Our steamers will remove wrinkles from clothing, drapery, tablecloths...virtually any fabric. Use the following information to help guide you to more proficient steaming.

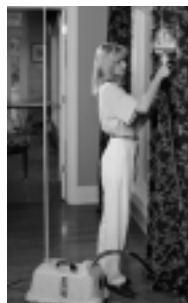
Some articles can be steamed better from the underside. This allows the steam to relax the fibers of the material, thus removing the wrinkles.



When steaming, touch material lightly with steam head and wrinkles will vanish instantly. The combination of the steam and the steam head is important for a smooth finish. Do not directly touch velvet or silk with the steam head.



Always steam with hose in upright position so any condensation is free to flow back into the steamer. If steaming in a low position near floor, frequently extend hose up and out to keep clear.



Pants may be easily steamed by hanging them by the cuff. You may also use your Jiffy Steamboard to serve as a vertical pressing board to position your garments.

Jiffy® Steamers are great for removing “closet crunch,” and they eliminate most trips to the drycleaner. Convenient hanger/hook mechanism holds both clothes and steam head securely.

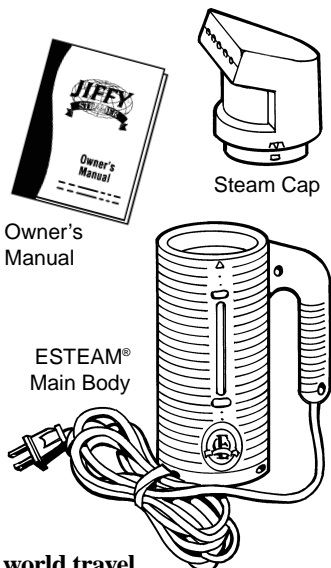


Esteam® Features and Directions

Features

- 3 times more powerful than any other hand-held steamer on the market
- Largest water reservoir available
- Wide mouth, easy-to-fill water tank
- 600-watt heating element; automatic safety shut-off temporarily cuts unit off when it runs dry
- Uses plain tap or distilled water (no additives required)
- Comfortable, easy-to-grip handle
- Special outer housing for cool-to-the-touch operation
- No internal water lines or pumps to become clogged by hard water
- 9-foot power cord for more manageable handling
- Fits neatly inside attaché or suitcase
- Available with a multiple plug converter for world travel

Includes:



ESTEAM®

Directions for Use

1. Make sure your Esteam® is unplugged before filling.
2. Check to make sure the factory-installed red o-ring is secure inside the water tank before operating steamer (figure #1).
3. Fill with tap or distilled water to the full mark on the outside of the steamer. **Never overfill.** Never use water left overnight in steamer. Stale water causes foaming action and can create water droplets.
4. After filling, place steam cap on steamer and twist firmly until cap arrows align with arrows on the tank (figure #2). Make sure it is secure before operating unit.
5. Plug your Esteam® into proper voltage outlet. Steamer will start heating within 15 seconds, providing live steam from cold water within 2 minutes.
6. Always steam with a vertical up and down motion (figure #3). **Do not tilt unit forward or backward.**
7. Avoid allowing steamer to run dry of water.
8. Refer to page 8 for complete cleaning instructions.



Figure 1



Figure 2

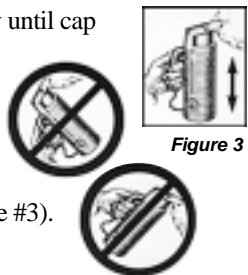
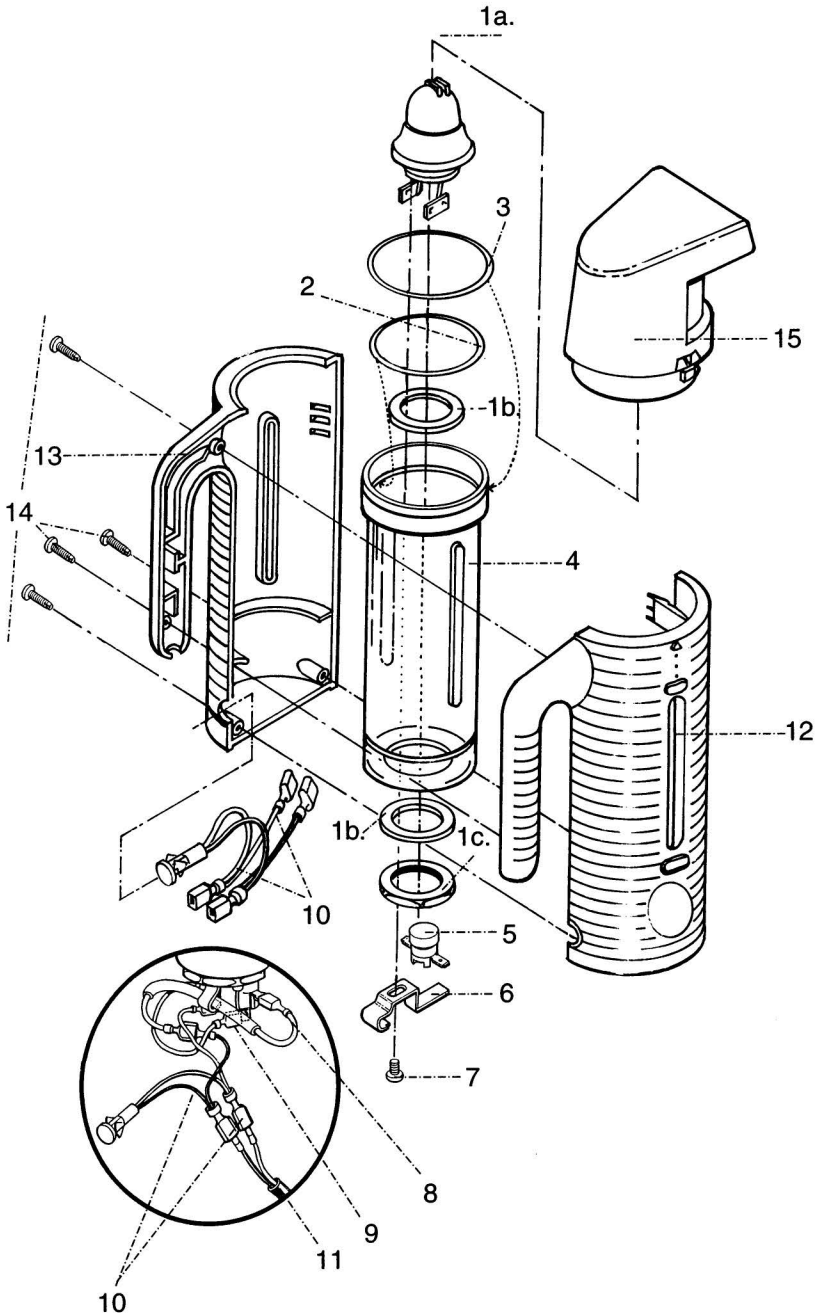


Figure 3

WARNING: Never operate without water. Unplug after each use.

Esteam® Parts Diagram



Esteam® Parts Diagram Key

Should you ever need replacement parts for your Jiffy® Steamer, you may purchase them separately. Use this handy diagram and parts list to identify any part you may need. Please include model and serial number when ordering.

ESTEAM®

Key#	Jiffy Steamer Part #	Part Description	List Price
1	0653	Esteam 120 Volt 600 Watt Heater with Gaskets and Nut	\$ 17.00
	0655	Esteam 230 Volt 600 Watt Heater with Gaskets and Nut	\$ 17.00
1a.		Esteam Heater (Sold with Item #0653 or #0655 as a Kit)	
1b.		Gasket for Esteam Heater (Sold with Item #0653 or #0655 as a Kit)	
1c.		Nut for Esteam Heater (Sold with Item #0653 or #0655 as a Kit)	
2	0661	Red Inside O-Ring	\$ 1.50
3	0662	Black Outside O-Ring	\$ 1.50
4	0669	Esteam Water Tank	\$ 24.00
5	0640	Esteam 36 T-L263 Thermostat	\$ 6.75
6	0643	Fusible Link Clamp	\$ 1.50
7	0644	Fusible Link Clamp Screw	\$ 0.50
8	0641	Fusible Link Wire with Insulated Lug (Orange)	\$ 2.50
9	0681	Red Wire with Insulated Lug	\$ 1.50
10	0645	Pilot Light with Wiring Harness for 120 Volt Electrical Systems	\$ 7.00
	0646	Pilot Light with Wiring Harness for 230 Volt Electrical Systems	\$ 7.00
11	0647	Cord set (18/2 gauge)	\$ 7.00
12	0665	Right Case Half	\$ 14.00
13	0666	Left Case Half	\$ 14.00
14	0667	Four (4) Screws for Esteam Outer Case Halves	\$ 1.00
15	0663	Complete Steam Cap with Face Plate	\$ 20.00

ACCESSORIES

0619	Voltage Converter for Travel	\$ 19.00
0898	Liquid Cleaner - 3 Ten (10) Ounce Bottles per Package*	\$ 15.00

*Not Available for Export.

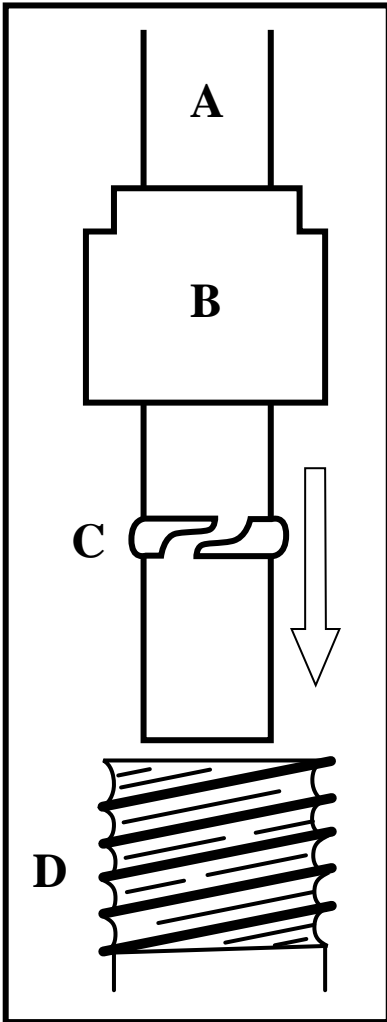
Esteam® Cleaning Instructions

Once you begin to see calcium scale collect in the bottom of your ESTEAM® hand steamer, it is time to use the Jiffy® Steamer Liquid Cleaner. Please follow these instructions:



1. Pour 4 ounces of water in your ESTEAM® hand steamer.
2. Plug in the unit and bring to full steam.
3. Unplug the unit and allow to cool for 2 minutes.
4. Pour out all water.
5. Pour in 5 ounces (1/2 bottle) of the Jiffy® Steamer Liquid Cleaner.
6. Leave the cleaner in the unit for 2 hours. May require scrubbing with a stiff bristle brush to remove excess sediment.
7. **DO NOT STEAM THE UNIT WITH THE LIQUID CLEANER.**
8. Pour out Liquid Cleaner.
9. Flush the unit 3 times with fresh water.
10. Resume steaming.

J-Series Rod Set Assembly



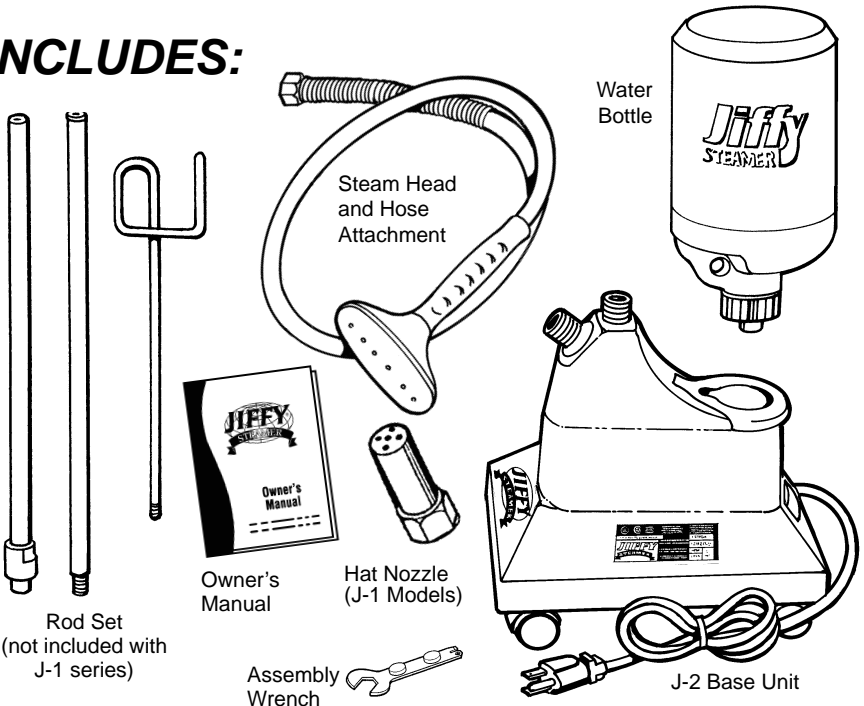
1. Screw all three (3) sections of the rod set together (hook, middle, and bottom sections).
2. Slide bottom section of rod (marked "A" on drawing) through the rod set nut (marked "B" on drawing) with the threads facing down.
3. Place 1/2 inch split ring (marked "C" on drawing) on bottom section of rod set approximately 1/2 inch from the end of the rod. Please note that steps 2 and 3 are completed at the Jiffy® Steamer factory.
4. Insert entire assembly into threaded base adapter on top of the steamer base (marked "D" on drawing). Press down firmly so that split ring (marked "C" on drawing) will slide up on the rod and come to rest at the top of the base adapter once the rod set is completely inserted.
5. Tighten the rod set nut (marked "B" on drawing) with assembly wrench provided with all J-Series Jiffy® Steamer (wrench is magnetized and may be found on the bottom plate of the unit).

Jiffy® J-1/J-2/J-200 Model Steamer

FEATURES

- Cast aluminum housing for durability (Models J-1 and J-2)
- High impact polymer housing (Model J-200)
- Lightweight, flexible hose - Models J-2/J-200 (J-1 series utilizes a brass hat nozzle)
- Shatterproof water bottle
- Safety wiring feature temporarily turns the unit off if it accidentally runs dry
- Comfortable, easy-to-grip handle
- Removes wrinkles up to five times faster than conventional ironing
- Easy-roll casters for mobility (casters not included with J-1 series)
- Numerous steam head attachments available
- 120 Volt or 230 Volt units available
- Backed by Jiffy®'s renowned customer service--*should your steamer need repair, send it to us and we will repair and ship the unit within 24 hours from its arrival to our plant*

INCLUDES:



Jiffy® J-1/J-2/J-200 Model Steamer Directions

1. For J-2/J-200 models, attach hose firmly with included assembly wrench, which is magnetized and located on the bottom of the unit (figure #1). Assemble and attach hose hanger rod set. See page 9 for assembly instructions. For J-1 models, the brass hat nozzle should already be attached. There is no rod set for J-1 models.



Figure 1

2. Invert bottle of fresh tap or distilled water, plug into proper voltage outlet, turn switch to lighted ON position and you will have steam within minutes. Never substitute the Jiffy® Steamer water bottle.



Figure 2

3. For easy operation, mount optional Jiffy® Steamboard to door or wall to hold clothing while steaming (figure #2). For hanging garments without optional Jiffy® Steamboard, simply install an eye screw or nail to inside of a doorway or directly onto a wall or you may use steamer's rod set as shown in figure 3. Touch material lightly with steaming head and wrinkles will vanish instantly. The combined touch of the steaming head and the direct steam is very important. Some articles can be steamed better from the underneath side. Speed and efficiency is accomplished with a little practice. Always steam with hose in an upright position, so any condensation is free to flow back into steamer. If steaming in a low position near floor, extend hose up and out frequently to keep clear of condensation. **DO NOT ALLOW STEAMER TO RUN DRY.**

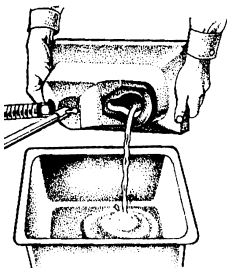


Figure 4

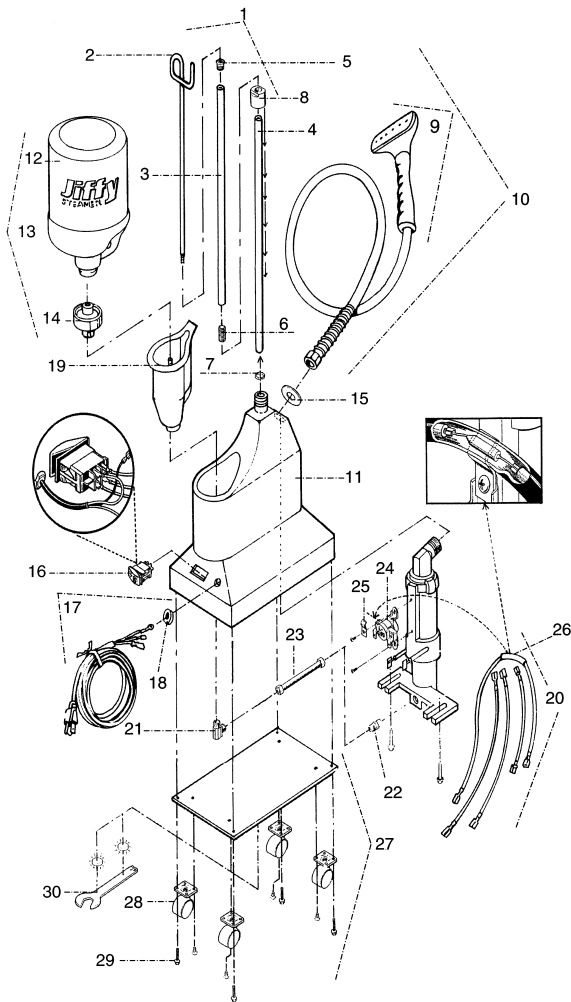
4. Hang steam head in an upright position in the hose hanger section when not in use and turn switch to OFF (figure #3).
5. Periodically, pour old water out of steamer to avoid sediment buildup and maintain proper water level (figure #4). Remove hard water deposits with Jiffy® Liquid Cleaner. See page 28 for complete cleaning instructions.



Figure 3

NOTE: No two water supplies have the same mineral content. If your steamer begins to cut on and off during normal use, the thermostat is indicating the heating unit needs the sediment cleaned out.

Jiffy® J-1/J-2/J-200 Parts Diagram



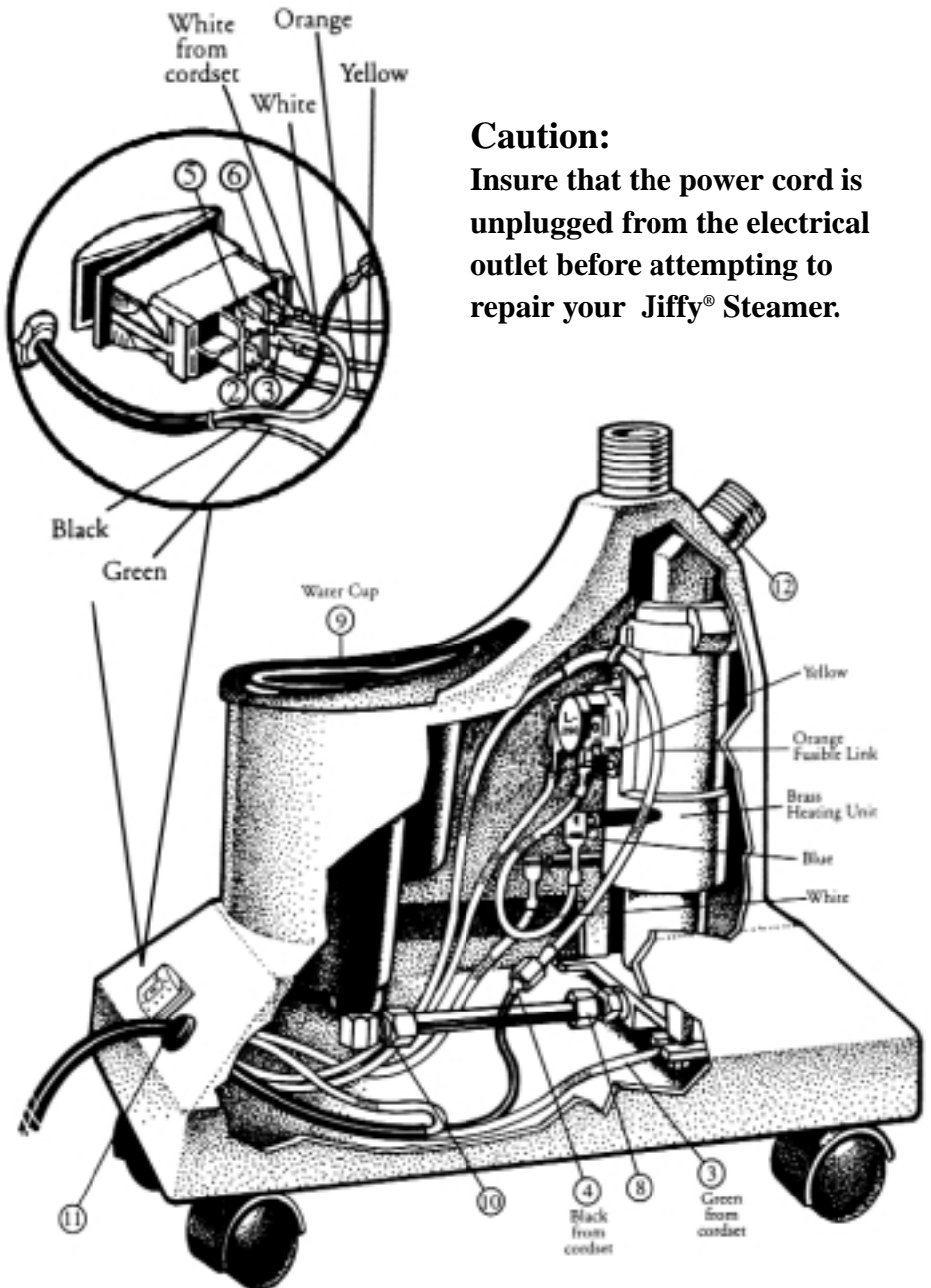
Should you ever need replacement parts for your Jiffy® Steamer, you may purchase them separately. Use this handy diagram and parts list to identify any part you may need. Please include model and serial number when ordering.

Jiffy Steamer			List Price
Key#	Part #	Part Description	
1	1030	Rod Set and Nut Complete with Metal Studs	\$ 25.50
	0031	Hose Hanger Rod Set with Adapter Complete	\$ 25.50
	0031A	Hose Hanger Rod Set without Adapter Complete	\$ 21.50
	0041	Base Adapter with Thumb Screw (for Old Style Rods Sets)	\$ 4.00
2	0035	Hook Section of Rod Set	\$ 6.50

Jiffy® J-1/J-2/J-200 Parts Diagram Key

3	0036	Middle Section of Rod Set	\$ 7.50
4	0037	Bottom Section of Rod Set	\$ 7.50
5	0043	Metal Threaded Cap Screw for Rod Set	\$ 1.50
6	0039	Metal Threaded Stud for Rod Sections	\$ 1.50
7	1031	1/2" Split Ring for Rod Set	\$ 0.50
8	1032	Rod Set Nut	\$ 6.00
9	0253	Plastic Steam Head/Handle Replacement Kit	\$ 22.00
10	0251	Plastic Head/Handle Hose Attachment Complete	\$ 50.00
	0280	Hose Per Foot (Black in Color)	\$ 3.00
11	0002	Painted Die Cast Aluminum Housing	\$ 51.50
	0023	Plastic Water Bottle "A" with Cap	\$ 6.50
	0027	Replacement Cap for Water Bottle "A"	\$ 0.75
12	0026A	Plastic Water Bottle "B" without Check Valve Cap	\$ 5.75
13	0025	Plastic Water Bottle "B" with Check Valve Cap	\$ 9.50
14	0027A	Replacement Check Valve Cap for Water Bottle "B"	\$ 3.75
15	0004	Round Beauty Ring	\$ 0.75
	0122	Toggle Switch (3 Pieces)	\$ 7.50
	0127	Red Neon Pilot Light with Lock Ring 120 Volt	\$ 4.00
	0128	Red Neon Pilot Light with Lock Ring 230 Volt	\$ 4.00
16	1125	Green Lighted Contura Rocker Switch 120 Volt	\$ 9.00
	1126	Green Lighted Contura Rocker Switch 230 Volt	\$ 9.00
17	0132	Cord Set (16/3 gauge) with Strain Relief	\$ 9.50
18	0146B	Cord Strain Relief	\$ 1.50
19	0028	Water Cup with 90 Degree Brass Fitting	\$ 18.00
	0147	Internal Wire Set for Models with Front Red Light	\$ 9.00
20	0148	Internal Wire Set for Models with Green Contura Rocker Switch	\$ 9.00
	0596	Heating Unit Kit (wiring included) for Models with Front Red Light - 120 Volt Cord Set and 4" Water Line	\$ 81.50
	0177A	Heating Unit Kit (wiring included) for Models with Front Red Light - 230 Volt Cord Set and 4" Water Line	\$ 81.50
	0597	Heating Unit Kit (wiring included) for Models with Green Lighted Rocker Switch - 120 Volt Cord Set and 4" Water Line	\$ 81.50
	0597A	Heating Unit Kit (wiring included) for Models with Green Lighted Rocker Switch - 230 Volt Cord Set and 4" Water Line	\$ 81.50
	0161A	Heating Unit Assembly (no wiring included) - 120 Volt and 4" Water Line	\$ 62.50
	0162A	Heating Unit Assembly (no wiring included) - 230 Volt and 4" Water Line	\$ 62.50
21	0030	Brass 90 Degree Elbow Joint	\$ 2.50
22	1130	3/8" x 1/4" Straight Brass Fitting for Heating Element Housing	\$ 2.50
23	0187	Copper Tube (4" length) with Nuts and Compression Rings	\$ 4.00
24	0160	L-290 Thermostat	\$ 8.00
25	0195	Fusible Link Clamp	\$ 1.50
26	0151	Fusible Link Wire with Insulated Lug	\$ 3.00
27	0009	Bottom Plate with Casters	\$ 13.50
28	0011	Bottom Plate Casters (Set of 4)	\$ 6.50
29	0010	Screws for Bottom Plate (4 Screws Total)	\$ 0.75
ACCESSORIES			
30	1050	Jiffy Steamer Assembly Wrench	\$ 4.00
	0274	Brass Hat Nozzle Attachment	\$ 13.00
	0254	Metal Head/Wood Handle Hose Attachment Complete	\$ 70.00
	0256	Metal Head / Wood Handle Only	\$ 37.50
	0269	Replacement Wooden Handle (for Metal Steam Heads)	\$ 7.00
	0262	Wig Hose Attachment	\$ 50.00
	1062	Steam Cleaning "B" Brush Hose Attachment	\$ 50.00
	1063	Brush Only for the "B" Hose Attachment	\$ 8.00
	0898	Liquid Cleaner - 3 Ten (10) Ounce Bottles per Package*	\$ 15.00
		*Not Available for Export.	

Jiffy® J-1/J-2/J-200 Wiring Diagram



Caution:

Insure that the power cord is unplugged from the electrical outlet before attempting to repair your Jiffy® Steamer.

Jiffy® J-1/J-2/J-200 Wiring Instructions

Please note switch terminal numbers 2, 3, 5 and 6 indicated on the enlarged switch diagram are marked on the actual switch. Jiffy® Steamers manufactured before May 2000 are not marked with the terminal switch numbers, but the terminal blades are in the same location.

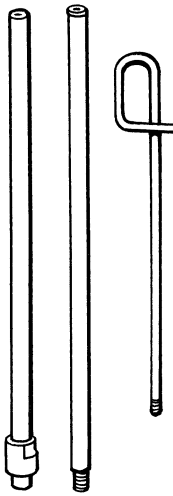
1. Insert cordset into housing and connect white neutral wire from cordset bundle to terminal number 5 on the switch.
2. Connect blue wire from the right side of heating element to the right side of the L-290 thermostat.
3. Insert brass heating unit into housing and tighten with 2 mounting screws. Connect green ground wire (from cordset) to the nearer of the two mounting screws. (In older J-2s, groundwire may also be attached to internal boss of housing.)
4. Connect black positive wire from cordset to plastic connector on orange fusible link wire.
5. Connect other end of orange fusible link to terminal number 2 on the switch.
6. Connect yellow wire from the left side of the thermostat to terminal number 3 on the switch.
7. Connect white wire from the left side of the heater unit to terminal number 6 on switch.
8. Insert one end of copper water line and compression ring into threaded fitting at bottom of brass heating unit and tighten nut with a $\frac{5}{8}$ " wrench.
9. Connect other end of water line with compression ring to 90 degree brass elbow at bottom of water cup and tighten with a $\frac{5}{8}$ " wrench. (Heating unit may be loosened and adjusted for a better fit if necessary.)
10. Set steamer upright and place black plastic strain relief approximately $4\frac{1}{2}$ " from end of cord and insert into housing using pliers.
11. Secure bottom plate with four screws.
12. To avoid leakage, be sure and tighten hose (or hat nozzle) with wrench before using steamer.

Jiffy® J-2000 Model Steamer

FEATURES

- Polymer outer housing unit for durability
- Lightweight, flexible hose
- Shatterproof water caddy
- Safety wiring feature temporarily turns the unit off should it accidentally run dry
- Comfortable, easy-to-grip handle
- Removes wrinkles up to five times faster than conventional ironing
- Easy-roll casters for mobility
- Numerous steam head attachments available
- Backed by Jiffy®'s renowned Customer Service--*should your steamer need repair, send it to us and we will repair and ship the unit within 24 hours from its arrival to our plant*

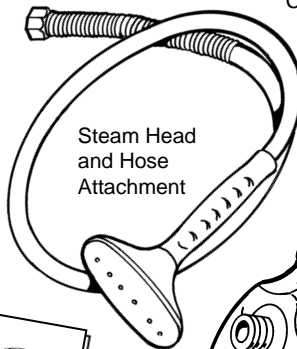
INCLUDES:



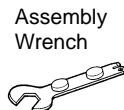
Rod Set
(not included with
J-1 series)



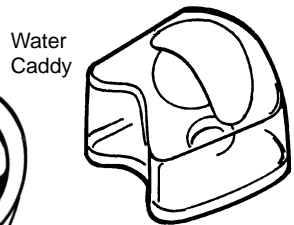
Owner's
Manual



Steam Head
and Hose
Attachment



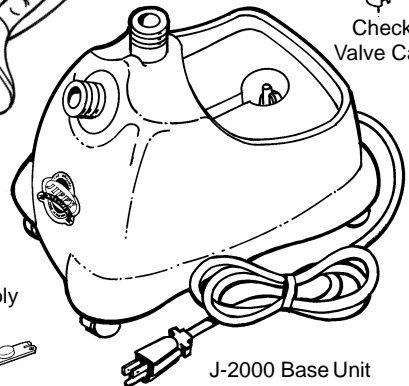
Assembly
Wrench



Water
Caddy



Check
Valve Cap



J-2000 Base Unit

Jiffy® J-2000 Directions

1. Attach hose firmly with included assembly wrench, which is magnetized and located on the bottom of the unit. Assemble and attach hose hanger rod set. See page 9 for assembly instructions.



Figure 1

2. Invert water caddy filled with distilled or tap water, plug into proper voltage outlet, turn switch to lighted ON position and you will have steam within minutes. Never substitute the Jiffy® Steamer water caddy.

3. For easy operation, mount optional Jiffy® Steamboard to door or wall to hold clothing while steaming (figure #2). For hanging garments without optional Jiffy® Steamboard, simply install an eye screw or nail to inside of a doorway or directly onto a wall or you may use your steamer's rod set as shown in figure 3. Touch material lightly with steaming head and wrinkles will vanish instantly. The combined touch of the steaming head and the direct steam is very important. Some articles can be steamed better from the underneath side. Speed and efficiency is accomplished with a little practice. Always steam with hose in an upright position, so any condensation is free to flow back into steamer. If steaming in a low position near floor, straighten hose up and out frequently to keep clear of condensation. **DO NOT ALLOW STEAMER TO RUN DRY.**



Figure 2

4. Hang steam head in an upright position in the hose hanger section when not in use and turn switch to OFF (figure #3).
5. Periodically, pour old water out of steamer to avoid sediment buildup and maintain proper water level (figure #4). Remove hard water deposits with Jiffy® Liquid Cleaner. Wipe water cup out with a hand towel. See page 28 for complete cleaning instructions.

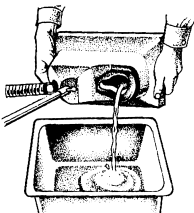


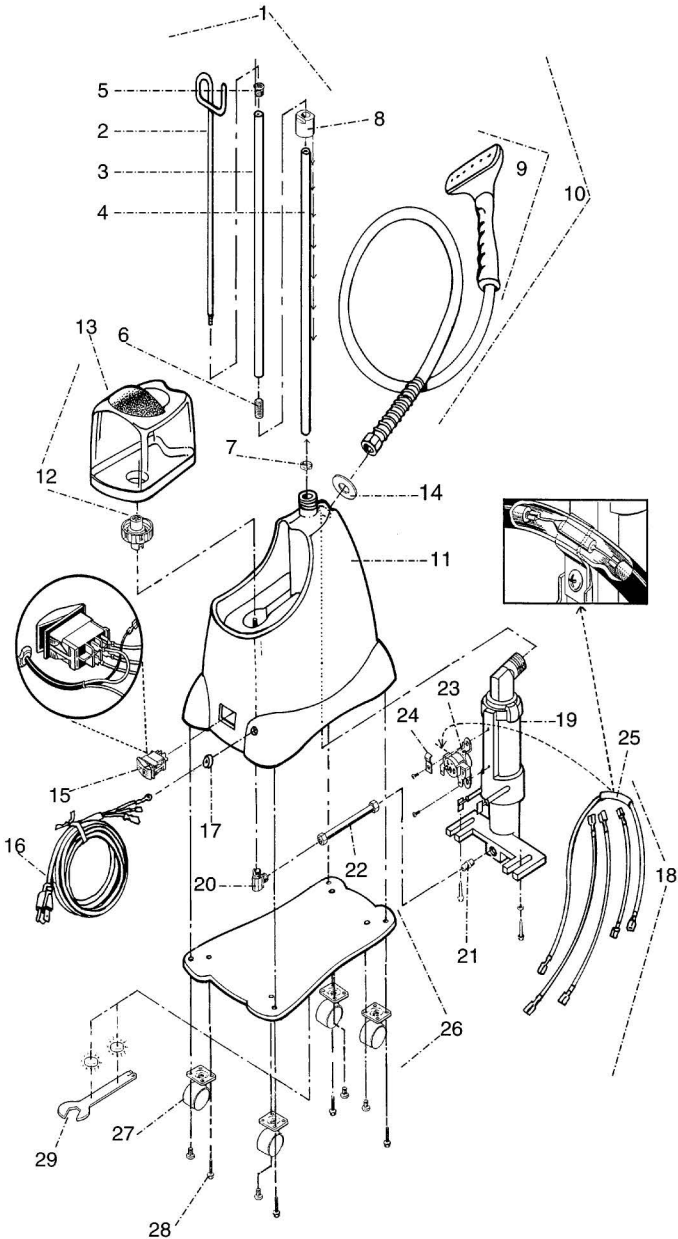
Figure 4



Figure 3

NOTE: No two water supplies have the same mineral content. If your steamer begins to cut on and off during normal use, the thermostat is indicating the heating unit needs the sediment cleaned out.

Jiffy® J-2000 Parts Diagram



Should you ever need replacement parts for your Jiffy® Steamer, you may purchase them separately. Use this handy diagram and parts list to identify any part you may need. Please include model and serial number when ordering.

Jiffy® J-2000 Parts Diagram Key

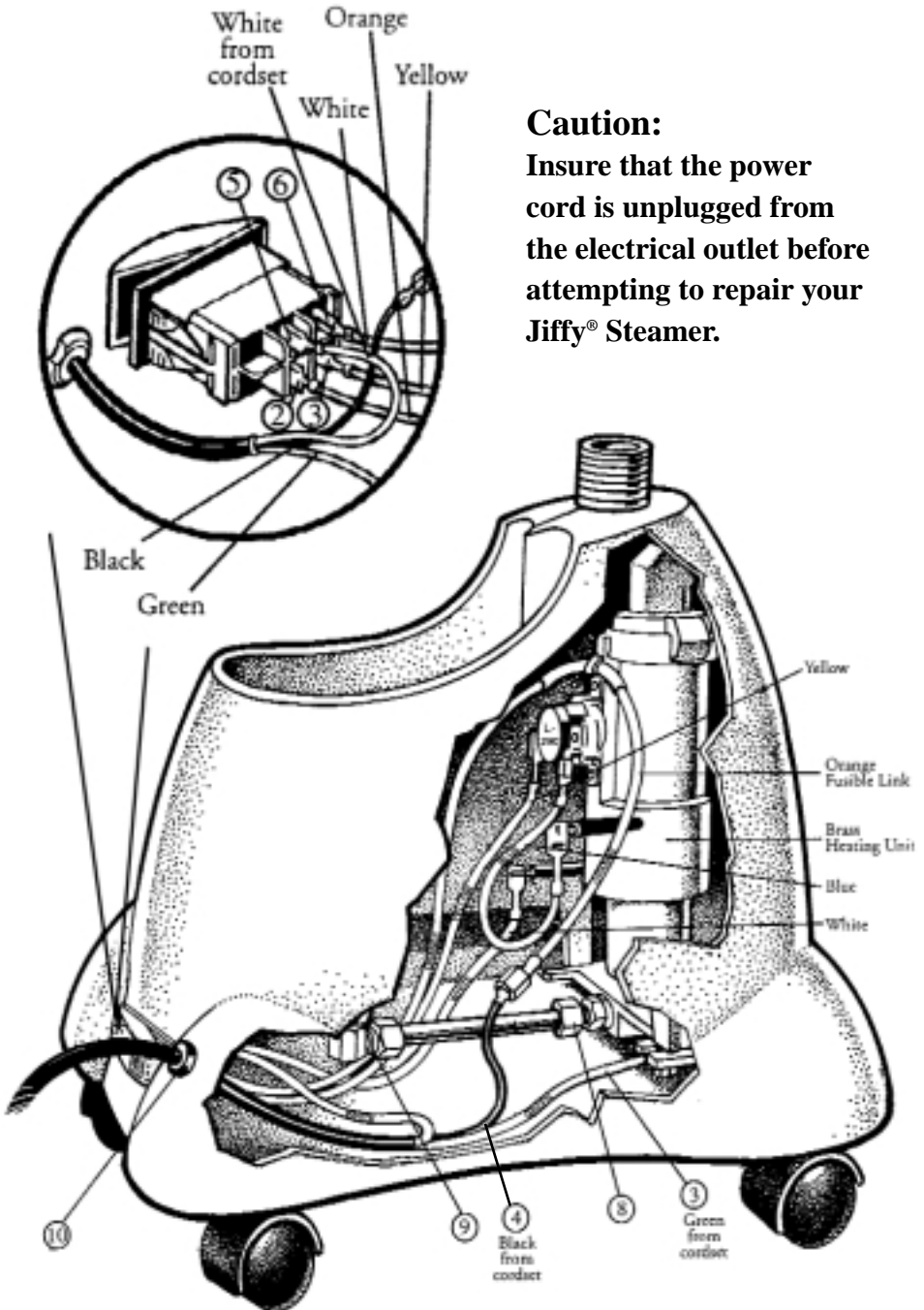
Jiffy Steamer		List	
Key#	Part #	Part Description	Price
1	1030	Rod Set and Nut Complete with Metal Studs	\$ 25.50
2	0035	Hook Section of Rod Set	\$ 6.50
3	0036	Middle Section of Rod Set	\$ 7.50
4	0037	Bottom Section of Rod Set	\$ 7.50
5	0043	Metal Threaded Cap Screw for Rod Set	\$ 1.50
6	0039	Metal Threaded Stud for Rod Sections	\$ 1.50
7	1031	1/2" Split Ring for Rod Set	\$ 0.50
8	1032	Rod Set Nut	\$ 6.00
9	0253	Plastic Steam Head/Handle Replacement Kit	\$ 22.00
10	0251	Plastic Head/Handle Hose Attachment Complete	\$ 50.00
	0280	Hose Per Foot (Black in Color)	\$ 3.00
11	1100	J-2000 Plastic Housing Kit	\$ 58.00
12	1140	J-2000 Water Caddy Complete with Check Valve Cap	\$ 28.00
13	1141	J-2000 Water Caddy Complete with out Check Valve Cap	\$ 24.25
	0027A	Replacement Check Valve Cap	\$ 3.75
14	0004	Round Beauty Ring	\$ 0.75
15	1125	Green Lighted Contura Rocker Switch - 120 Volt	\$ 9.00
	1126	Green Lighted Contura Rocker Switch - 230 Volt	\$ 9.00
16	0132	Cord Set (16/3 gauge) with Strain Relief	\$ 9.50
17	0146B	Cord Strain Relief	\$ 1.50
18	0148	Internal Wire Set	\$ 9.00
	1193	Heating Unit Kit (wiring included) for Models with Green Lighted Contura Rocker Switch - 120 Volt Cord Set and 4 1/2" Water Line	\$ 81.50
	1194	Heating Unit Kit (wiring included) for Models with Green Lighted Contura Rocker Switch - 230 Volt Cord Set and 4 1/2" Water Line	\$ 81.50
19	0161B	Heating Unit Assembly (no wiring included) for Models with Green Lighted Rocker Switch - 120 Volt Cord Set and 4 1/2" Water Line	\$ 62.50
	0162B	Heating Unit Assembly (no wiring included) for Models with Green Lighted Contura Rocker Switch - 230 Volt Cord Set and 4 1/2" Water Line	\$ 62.50
20	0030	Brass 90 Degree Elbow Joint	\$ 2.50
21	1130	3/8" x 1/4" Straight Brass Fitting for Heating Element Housing	\$ 2.50
22	0187	Copper Tube(41/2" length) with Nuts and Compression Rings	\$ 4.00
23	0160	L-290 Thermostat	\$ 8.00
24	0195	Fusible Link Clamp	\$ 1.50
25	0151	Fusible Link Wire with Insulated Lug	\$ 3.00
26	1120	Bottom Plate with Casters	\$ 18.00
27	0011	Bottom Plate Casters (Set of 4)	\$ 6.50
28	0010	Screws for Bottom Plate (4 Screws Total)	\$ 0.75
ACCESSORIES			
29	1050	Jiffy Steamer Assembly Wrench	\$ 4.00
	0254	Metal Head/Wood Handle Hose Attachment Complete	\$ 70.00
	0256	Metal Head / Wood Handle Only	\$ 37.50
	0262	Wig Hose Attachment	\$ 50.00
	1062	Steam Cleaning "B" Brush Hose Attachment	\$ 50.00
	1063	Brush Only for the "B" Hose Attachment	\$ 8.00
	0898	Liquid Cleaner - 3 Ten (10) Ounce Bottles per Package*	\$ 15.00
		*Not Available for Export.	

J-2000

Jiffy® J-2000 Wiring Diagram

Caution:

Insure that the power cord is unplugged from the electrical outlet before attempting to repair your Jiffy® Steamer.



Jiffy® J-2000 Wiring Instructions

Please note switch terminal numbers 2, 3, 5 and 6 indicated on the enlarged switch diagram are marked on the actual switch. Jiffy® Steamers manufactured before May 2000 are not marked with the terminal switch numbers, but the terminal blades are in the same location.

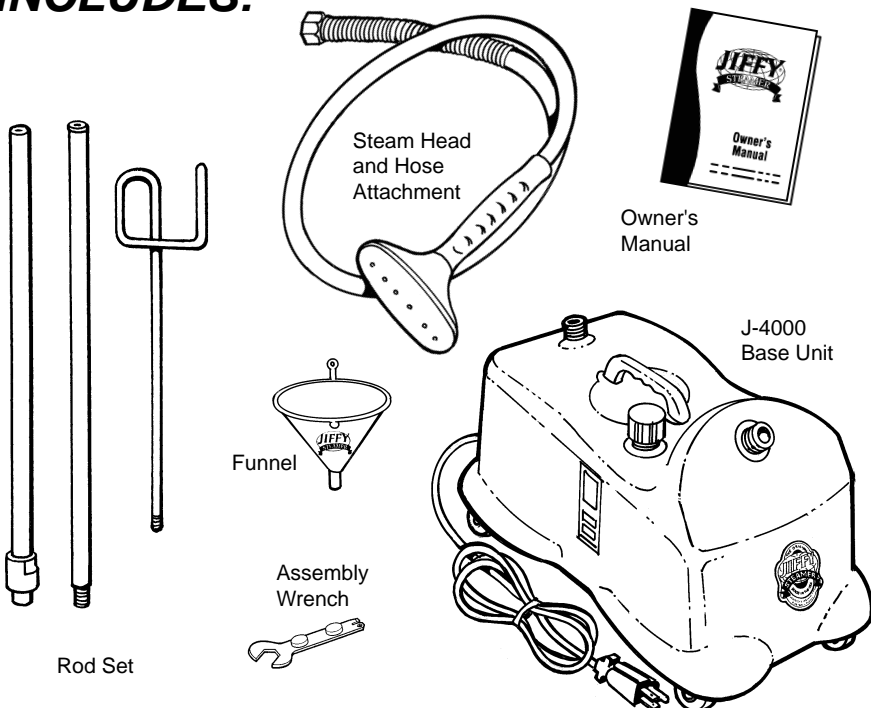
1. Insert cordset into housing and connect white neutral wire from cordset bundle to terminal number 5 on the switch.
2. Connect blue wire from the right side of heating element to the right side of the L-290 thermostat.
3. Insert brass heating unit into housing and tighten with 2 mounting screws. Connect green ground wire (from cordset) to the nearer of the two mounting screws.
4. Connect black positive wire from cordset to plastic connector on orange fusible link wire.
5. Connect other end of orange fusible link to terminal number 2 on the switch.
6. Connect yellow wire from the left side of the thermostat to terminal number 3 on the switch.
7. Connect white wire from the left side of the heater unit to terminal number 6 on switch.
8. Insert one end of copper water line and compression ring into threaded fitting at bottom of brass heating unit and tighten nut with a $\frac{5}{8}$ " wrench.
9. Connect other end of water line with compression ring to 90 degree brass elbow at bottom of water cup and tighten with a $\frac{5}{8}$ " wrench. (Heating unit may be loosened and adjusted for a better fit if necessary.)
10. Set steamer upright and place black plastic strain relief approximately 4 $\frac{1}{2}$ " from end of cord and insert into housing using pliers.
11. Secure bottom plate with four screws.
12. To avoid leakage, be sure and tighten hose (or hat nozzle) with wrench before using steamer.

Jiffy® J-4000 Model Steamer

FEATURES

- Built-in, easy-to-read sight gauge also indicates sediment build-up
- Cast aluminum housing unit for durability
- Corrosion-proof stainless steel boiler tank--no water lines to become clogged with hard water deposits
- Dual thermostats for preheat and steam settings.
- Safety wiring feature temporarily turns the unit off should it accidentally run dry
- Numerous steam head attachments available
- Backed by Jiffy®'s renowned customer service--*should your steamer need repair, send it to us and we will repair and ship the unit within 24 hours from its arrival to our plant*

INCLUDES:



Jiffy® J-4000 Directions

1. Attach hose firmly with included assembly wrench, which is magnetized and located on the bottom of the unit (figure #1). Assemble and attach hose hanger rod set (figure #2). See page 9 for assembly instructions.
2. Using supplied funnel, add a maximum of four quarts of warm (fresh tap or distilled) water (cold water takes longer to preheat). Do not overfill. Plug into proper voltage outlet, turn switch to “PREHEAT”. Steamer will hold at this temperature, and the light will go off and on occasionally. **NOTE:** The J-4000 Steamer contains a large water reservoir for 2 hours of continuous steaming. Leave the switch in the “PREHEAT” position (figure #3) if you plan to use your steamer throughout the day. This will maintain water temperature in the reservoir.



Figure 1



Figure 2

3. Immediately after water is preheated, turn switch to “STEAM” position for steam in approximately 2 minutes. The combined touch of the steaming head and the direct steam is very important. Some articles can be steamed better from the underneath side. Always steam with hose in upright position so any condensation is free to flow back into steamer. If steaming in a low position near floor, straighten hose up and out frequently to keep clear of condensation. If steamer runs dry it will temporarily shut off. Once finished using the unit, turn the switch to the “OFF” position. If more water needs to be added to the steamer, allow steamer to cool before removing fill cap and adding more water. Never pour cold water on a hot element. Resume steaming by resetting the switch to the “STEAM” position.



Figure 3

4. Hang steam head and hose in upright position in the hose hanger section when not in use (figure #4) and turn switch to the “OFF” position (figure #3).

5. Periodically, pour old water out of steamer to avoid sediment build up and maintain proper water level. Never have more than 4 quarts of water in steamer. If overfilled, water will boil up into hose. The Jiffy® Liquid Cleaner is recommended every 6 months to flush mineral deposits. See page 29 for complete cleaning instructions.

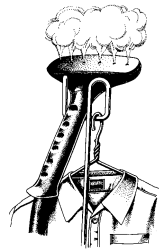
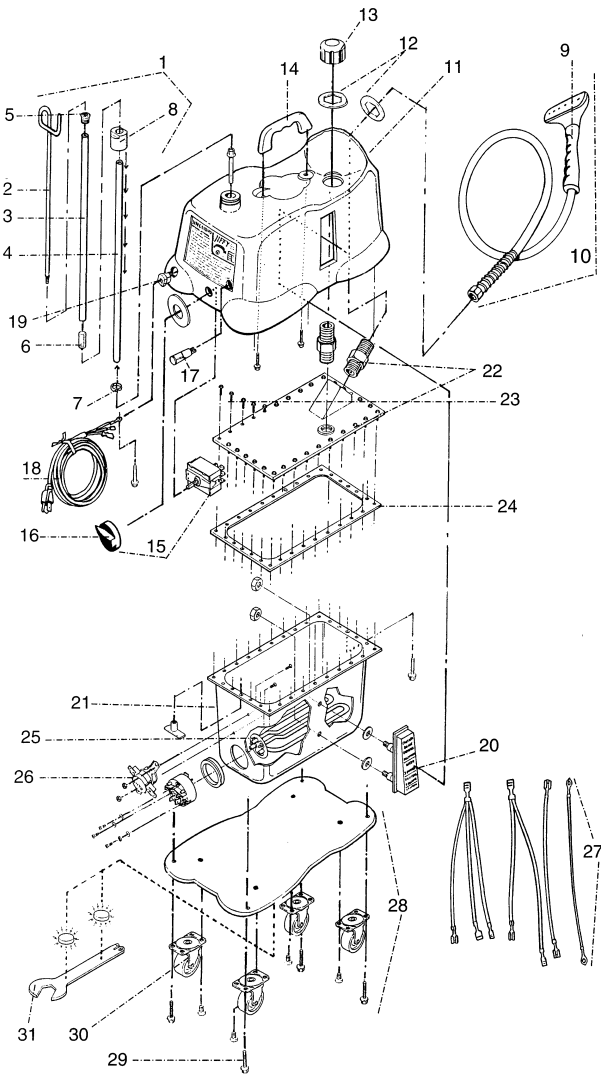


Figure 4

J-4000

WARNING: Never operate without water. Unplug after each use for added safety.

Jiffy® J-4000 Parts Diagram



Should you ever need replacement parts for your Jiffy® Steamer, you may purchase them separately. Use this handy diagram and parts list to identify any part you may need. Please include model and serial number when ordering.

Jiffy Steamer			List Price
Key#	Part #	Part Description	
1	1030	Rod Set and Nut Complete with Metal Studs	\$ 25.50
	1034	Rod Set and Nut Complete for Drapery Steamers	\$ 29.00
2	0035	Hook Section of Rod Set	\$ 6.50

Jiffy® J-4000 Parts Diagram Key

3	0036	Middle Section of Rod Set (with Barrel Stud and Cap Screw)	\$ 7.50
4	0037	Bottom Section of Rod Set	\$ 7.50
	0038	Additional Middle Section of Rod Set for Drapery Steamers	\$ 7.50
5	0043	Metal Threaded Cap Screw for Rod Set	\$ 1.50
6	0039	Metal Threaded Stud for Rod Sections	\$ 1.50
7	1031	1/2" Split Ring for Rod Set	\$ 0.50
8	1032	Rod Set Nut	\$ 6.00
9	0253	Plastic Steam Head/Handle Replacement Kit	\$ 22.00
10	0251	Plastic Head/Handle Hose Attachment Complete	\$ 50.00
	0280	Hose Per Foot (Black in Color)	\$ 3.00
11	1301	J-4000 Die Cast Aluminum Housing	\$ 72.00
12	0006	Hex Beauty Rings (Set of 2)	\$ 1.50
13	0049	Water Fill Cap	\$ 6.50
	0053	Funnel	\$ 3.50
14	0054	Housing Handle with Two Screws	\$ 7.00
15	0199	Rotary Power Switch and Knob	\$ 12.00
16	0201	Replacement Knob Only for Rotary Power Switch	\$ 1.50
17	1310	Red Neon Pilot Light (120 VOLT)	\$ 4.50
	1311	Red Neon Pilot Light (230 VOLT)	\$ 4.50
18	0133	Cord Set (14/3 gauge) with Strain Relief	\$ 9.50
19	0146C	Cord Strain Relief	\$ 1.50
20	0050	Water Level Sight Gauge with Nuts and Washers	\$ 32.00
	1353	Stainless Steel Boiler Tank Kit Complete (120 Volt)	\$ 155.00
	1354	Stainless Steel Boiler Tank Kit Complete (230 Volt)	\$ 155.00
21	1374	Stainless Steel Boiler Tank with Sight Gauge (J-4000)	\$ 78.00
	0074	Stainless Steel Boiler Tank with Sight Gauge (J-3)	\$ 46.00
	0074A	Stainless Steel Boiler Tank with Sight Gauge (J-4)	\$ 78.00
22	0058	Boiler Tank Lid with 2 Brass Fittings and 2 Beauty Rings	\$ 28.00
23	0071	Boiler Tank Screw Set (Set of 30 + 1 Tee Nut)	\$ 6.00
	0061	Boiler Tank Silicone Sealer (2.8 Fluid Ounces)	\$ 4.50
	0062	Boiler Tank Silicone Sealer (10.1 Fluid Ounces)	\$ 8.00
24	0075	Boiler Tank Gasket	\$ 8.50
25	1355	Heating Element (120 Volt, 1500 Watt)	\$ 28.00
	1356	Heating Element (230 Volt, 1500 Watt)	\$ 28.00
	1350	Heating Element (120 Volt, 1500 Watt) & Control Kit Complete	\$ 46.00
	1351	Heating Element (230 Volt, 1500 Watt) & Control Kit Complete	\$ 46.00
	1352	Control Kit with Seal and Hardware	\$ 18.00
	1362	Hardware Kit for J-4000 Control	\$ 1.50
26	0203	Preheat Thermostat (L-170)	\$ 8.00
27	1314	Internal Wire Set (Set of 4 Wires)	\$ 8.00
28	1320	Bottom Plate with Four Casters	\$ 18.00
29	0017	Bottom Plate Screws (Set of 4)	\$ 0.75
30	0018	Bottom Plate Casters (Set of 4)	\$ 6.50

ACCESSORIES

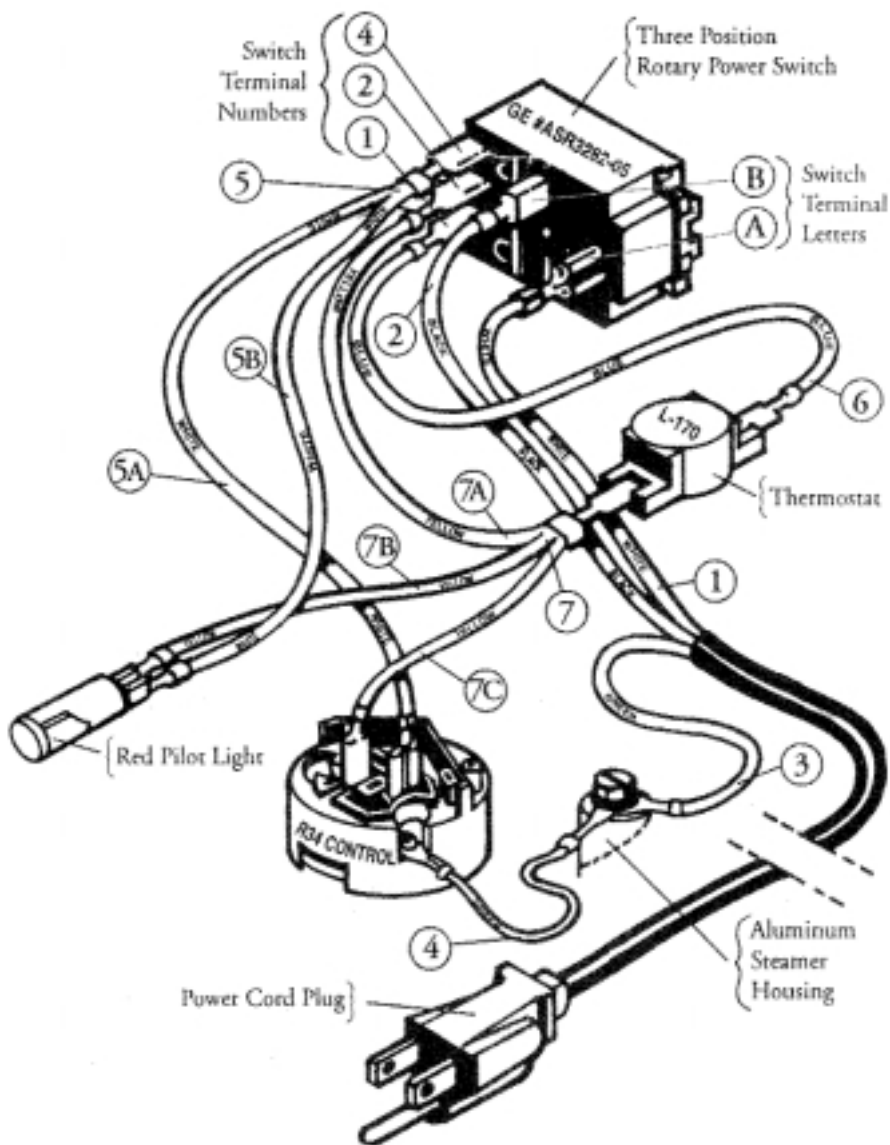
31	1050	Jiffy Steamer Assembly Wrench	\$ 4.00
	0259	Auto Hose Attachment with Dual Metal Heads	\$ 82.00
	0257	Carpet Hose Attachment with 12" wide Metal Head	\$ 75.00
	0252	7.5' Drapery Hose Attachment with Plastic Steam Head	\$ 56.00
	0255	7.5' Drapery Hose Attachment with Metal Steam Head	\$ 76.00
	0254	Metal Head / Wood Handle Hose Attachment Complete	\$ 70.00
	0256	Metal Head / Wood Handle Only	\$ 37.50
	0269	Replacement Wooden Handle (for Metal Steam Heads)	\$ 7.00
	0262	Wig Hose Attachment	\$ 50.00
	0274	Brass Hat Nozzle Attachment	\$ 13.00
	1062	Steam Cleaning "B" Brush Hose Attachment	\$ 50.00
	1063	Brush Only for the "B" Hose Attachment	\$ 8.00
	0898	Liquid Cleaner - 3 Ten (10) Ounce Bottles per Package*	\$ 15.00

*Not Available for Export.

Jiffy® J-4000 Wiring Diagram

Caution:

Insure that the power cord is unplugged from the electrical outlet before attempting to repair your Jiffy® Steamer.



Jiffy® J-4000 Wiring Instructions

Please note, the switch terminal numbers and the switch terminal letters are marked on the actual switch.

1. Neutral wire #1 (white wire from the cord set bundle) attaches to “A” marked on the GE #ASR3282-05 rotary power switch.
2. Positive wire #2 (black wire from cord set bundle) attaches to “B” marked on the GE #ASR3282-05 rotary power switch.
3. Ground wire #3 (green wire from cord set bundle) attaches to the aluminum steamer housing.
4. Ground wire #4 (green wire from electrical control) attaches to the aluminum steamer housing.
5. The double white wire #5 connects from switch terminal number 4 as follows:
 - The 5A leg of the double white wire #5 connects to the terminal pin on the right side of the R34 electrical control, which is the one nearest to the ground wire.
 - The 5B leg of the double white wire #5 connects to either side of the red pilot light.
6. Blue wire #6 connects switch terminal number 1 to the top side of the L-170 PREHEAT thermostat.
7. Triple yellow wire #7 connects from the bottom side of the L170 PREHEAT thermostat as follows:
 - The 7A leg of the triple yellow wire #7 goes to switch terminal number 2.
 - The 7B leg of the triple yellow wire #7 goes to the red pilot light.
 - The 7C leg of the triple yellow wire #7 goes to the left side of the R34 electrical control.

Questions?

Call our technical support line

@ 1-800-525-4339

or e-mail us at

jsinfo@jiffysteamer.com

J-4000

Jiffy® J-1/J-2/J-200 /J-2000 Cleaning Instructions

1. Remove hose from unit. Use caution as hose may be hot.
2. Run steamer for 5 minutes in normal operating mode.
3. Turn unit off and unplug from outlet.
4. Use a water hose to clean the hose attachment if blocked with sediment build-up. This should remove most deposits from the hose itself.
5. Remove water bottle and any excess water. Pour 1 bottle of Jiffy® Liquid Cleaner into steamer, wait two hours.
6. Do not steam with the liquid cleaner solution in the unit.
7. Pour out liquid cleaner.
8. Rinse with clean water 2 or 3 times by filling water cup with water and empty by allowing water to exit the water cup area.
9. If steamer is not completely clogged, this should clean the internal parts of the unit and remove most sediment build-up. Repeat process as necessary until all sediment is removed.

NOTE: Jiffy® Steamer Company recommends the liquid cleaner to be used on a regular basis every 3 to 6 months depending on your water supply. We suggest using the liquid cleaner as a preventative measure rather than a cure. In most cases, a unit that is severely clogged will require disassembly to properly clean and prolong the life span of your unit. A Jiffy® Steamer will provide many years of quality steaming if maintained and cleaned regularly.



Jiffy® J-4000 Cleaning Instructions

1. If sediment is visible in the sight gauge then it is recommended that you use our Jiffy® Liquid Cleaner.
2. Remove hose from unit.
3. Use a water hose to clean the hose attachment if blocked with sediment build-up. This should remove most deposits from the hose itself.
4. Put 1/2 gallon water into steamer and add 1 bottle of Jiffy® Cleaner. PREHEAT unit only. Use only Jiffy® Cleaner as other cleaners may damage internal parts.
5. When red PREHEAT light goes off, turn unit off and unplug the unit. Allow the steamer to soak for 1 hour and cool. **DO NOT STEAM THIS SOLUTION IN THE STEAMER.**
6. Pour out solution and rinse unit with clean water. This procedure should remove most sediment and clean the unit to prevent spitting. Please note that over-filling the unit and/or not extending the hose completely will also cause spitting.
7. If steamer is not completely clogged, this should clean the internal parts of the unit and remove most of the sediment build-up. Repeat process as necessary until all sediment is removed. The unit may need to be sent to the factory for a thorough cleaning if the steaming results do not improve.

NOTE: Jiffy® Steamer Company recommends the liquid cleaner to be used on a regular basis every 3 to 6 months depending on your water supply. We suggest using the liquid cleaner as a preventative measure rather than a cure. In most cases, the unit that is severely clogged will require disassembly to properly clean and prolong the life span of your unit. A Jiffy® Steamer will provide many years of quality steaming if maintained and cleaned regularly.

Jiffy® Steamer Maintenance

Clean and rinse your steamer regularly:

All steamers need to be cleaned and rinsed on occasion to remove mineral deposits. We recommend our Jiffy® Steamer Liquid Cleaner for cleaning internal parts.

Never use additives:

Additives such as salt, perfumes and dyes should never be added to your steamer water. These substances will corrode or clog internal parts.

Never allow your steamer to run dry:

Running a steamer dry will cause internal damage to the heating element and wiring.

Never pour cold water into a hot steamer:

If by mistake your steamer has run dry of water, allow the unit to cool before adding water. Cold water poured on top of a hot heating element may cause damage to the element.

Steam in a vertical, upright position:

Do not use your steamer in a horizontal position like an iron. Steam in a vertical up and down motion. This will allow the condensation in the hose to flow back into the steamer.

Secure your hose nut tightly:

If your steamer has a hose attachment, use the onboard assembly wrench to insure the brass nut is fastened tightly to the base of the steamer. Wrench is magnetized to the bottom plate.

Never use an extension cord:

Extension cords should not be used on this product. Adding an extension cord may create damage to the steamer's power cord and internal wiring.

Do not pull steamer by the power cord:

Pulling the steamer by the power cord may cause the internal wiring to become loose.

Never use your foot to turn steamer ON/OFF:

Damage may occur to the power switch should you turn the unit off using excess pressure with your foot.

Storing the steamer:

Before storing the steamer for an extended period (30 days or more), empty all water from the unit. Water becomes stale with time and may clog internal parts.

Other Jiffy® Steamer Accessories

Esteam® Converter & Adapter Plugs

Take your Esteam® worldwide and use it at 100% power. Our converter contains a 25 amp triac semiconductor for stable power output, large aluminum heat-sink to dissipate heat and a UL listed, flame retarding, non-conductive material used in the outer housing. Available for 120 volt units only.



The Jiffy® Steamboard

The Jiffy® Steamboard provides a convenient workspace for quickly setting pleats and creases. Ideal for clothing retailers, tailors and home use. Attachments enclosed with the board allow you to mount the unit to your baseboard, hang it over a door or mount it directly to the wall. Not for export.



Jiffy® Liquid Cleaner

Our unique liquid cleaner removes hard water deposits from your Jiffy® Steamer. Easy to use, and it works on all Jiffy® models. Use only Jiffy® Cleaner as other cleaners may damage internal parts. Not available for export.

PATENTS

Jiffy® Steamer products and their components mentioned within this manual are covered by some or all of the following U.S. patents: D421,165 / D423,156 / D426,924. The design and configuration of the Model J-2 is a registered U.S. Trademark. Other patents are pending.

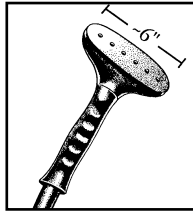
Jiffy® Steamer Head Configurations

Optional Steam Head Configurations

Configuration #1

Standard Plastic Steam Head

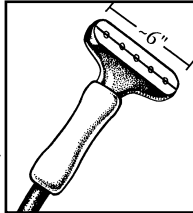
Available on the J-2®, J-2000®, J-4000® and J-4000D® Model steamers.



Configuration #2

Metal Steam Head with Wooden Handle

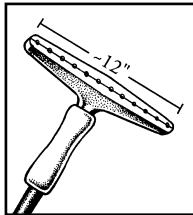
Available on the J-2M®, J-2000M®, J-4000A®, J-4000DM® and J-4000M® Model steamers.



Configuration #3

Carpet Steam Head

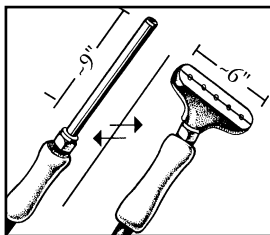
Available on the J-4000C® Model steamer.



Configuration #4

Auto/Upholstery Pipe Steam Head & the Interchangeable Metal Steam Head

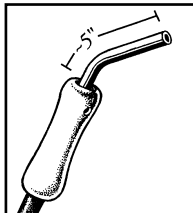
Available on the J-4000A® Model steamer.



Configuration #5

Wig Steam Head

Available on the J-2W® and J-4000W® Model steamers.

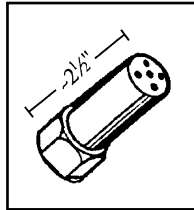


Jiffy® Steamer Plug Configurations

Configuration #6

Hat Steam Nozzle

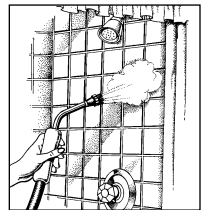
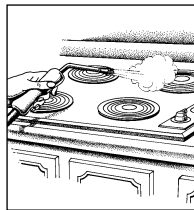
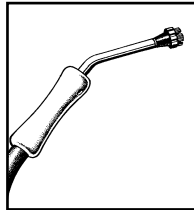
Available on the J-1®, and J-4000H® Model steamers.



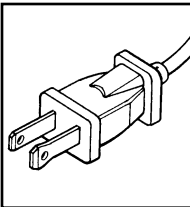
Configuration #7

Steam Cleaning Brush Head

Available on the J-2B®, J-2000B®, and J-4000B® Model steamers.

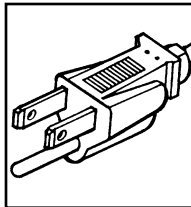


Jiffy® Steamer World Power Supply Configurations



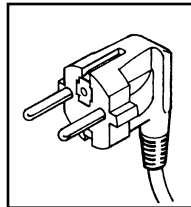
**NEMA 1-15 120V
PLUG #1**

Not available on the J-4000® Series.

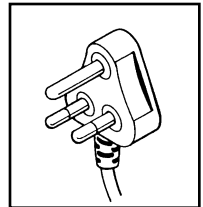


**NEMA 5-15 120V
or 230V
PLUG #2**

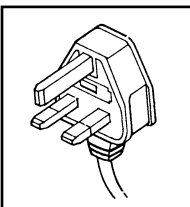
Not available on the ESTEAM® Series.



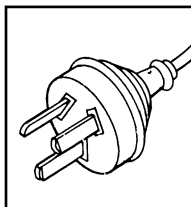
**CEE-7 230V
PLUG #3**



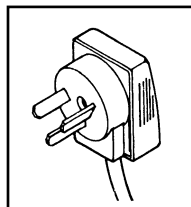
**BS 546 230V
PLUG #4**



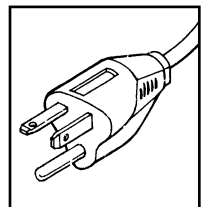
**BS 1363 230V
PLUG #5**



**ETSA S/86 230V
PLUG #6**



**SI 32 230V
PLUG #7**



**620-P 230V
PLUG #8**

Jiffy® Steamer Troubleshooting

Esteam®

PROBLEM	POSSIBLE CAUSE	SOLUTION
Steamer works poorly or cycles ON and OFF while steaming.	The unit has sediment build-up and needs a thorough cleaning. Possible thermostat trouble.	Use Jiffy® Liquid Cleaner to clean off element. A small brush may be needed to help scrub unit. Replace thermostat on unit.
The red indicator light illuminates but the unit never heats or steams.	Possible blown fusible link wire. Possible blown element.	Replace fusible link wire or replace element in unit. This may be done by you, an authorized repair center, or by a Jiffy® Steamer Company technician.
The unit spits water from steam cap.	The unit is being over-filled. The unit needs to be cleaned out inside tank and cap. User is tilting unit too far forward or backward during usage.	For best results from your steamer, use Jiffy Liquid Cleaner periodically to remove sediment deposits from your water (every 3 to 4 months) depending on how much the unit is used. Do not over-fill unit above max water mark indicated on side of unit.

J-1 / J-2 / J-200 / J-2000 Models

PROBLEM	POSSIBLE CAUSE	SOLUTION
Steamer works poorly or cycles ON and OFF while steaming.	The unit has sediment build-up and needs a thorough cleaning. Possible thermostat trouble.	Jiffy® Liquid Cleaner may solve the problem, but manual cleaning is the best solution at this point. The heating element must be disassembled and cleaned out manually.
The green indicator light does not illuminate when turned to ON position.	The fuse wire is bad. The cordset is bad. Wires may be disconnected. The switch is bad. The unit is not plugged in. The outlet may be defective or inoperable.	Check the unit's current flow and replace defective part. Try to plug the unit into another outlet.
On units purchased in 1986 and before, the red indicator light illuminates but the unit never heats or steams.	The heating element may be bad.	Replace the heating element. This may be done by you, an authorized repair center, or by a Jiffy® Steamer Company technician.
The steamer spits water from the steam head.	The steam head may be cracked or damaged. The unit has been overfilled (4 quarts maximum). The rod set is not fully assembled (three sections for most models and four sections for drapery steamers).	Replace head once signs of excess wear are apparent. Make sure the hose is straight and that it has no kinks which may trap condensation in the hose.
Unit does not produce steam when green indicator light is on.	Check water level to make sure unit is not out of water. Heating element may be bad. Wire may be disconnected.	Turn unit off, allow cool down period and refill water container. Check unit with a voltage meter (if qualified).

Jiffy® Steamer Troubleshooting

J-3 / J-4 / J-4000 Model

PROBLEM	POSSIBLE CAUSE	SOLUTION
The red indicator light remains ON for over 20 minutes, but no steam is produced from the unit at the STEAM setting.	The heating element may be bad. Control may be bad. Check water level.	Replace the heating element or control unit and reseal the tank assembly with high temperature silicone.
The red indicator light does not illuminate when the switch is turned to the PREHEAT or STEAM setting.	The fuse wire is bad. The cordset is bad. Wires may be disconnected. The switch is bad. The unit is not plugged in.	Check the unit's current flow and replace defective part.
The red indicator light works on the PREHEAT or STEAM setting, but not on both.	Wires may be disconnected. The switch is bad. The L170 control thermostat is bad.	Replace the heating element and control kit. This may be done by you replacing switch. Wiring needs to be checked by an authorized repair center, or by a Jiffy® Steamer Company technician.
The steamer spits water from the steam head.	The steam head has a crack or blemish. Hard water sediment has built up in the head. The unit has been overfilled (4 quarts maximum). The rod set is not fully assembled (three sections for most models and four sections for drapery steamers).	Replace head once signs of excess wear are apparent. Never fill the steamer with more than 4 quarts. Make sure the hose is straight and that it has no kinks which may trap condensation in the hose.
The steamer leaks water at the base of the unit.	There may be a hole in the tank (most common with older model units using aluminum tanks). The brass coupling between the hose and unit may be loose or the sight gauge is loose. The silicone sealant or rubber gasket around the tank assembly is leaking.	The faulty tank must be replaced with a new stainless steel tank. This involves replacing the tank, lid, and housing. This task is best serviced by a Jiffy® Steamer Company technician. Replace sight gauge. Tighten hose coupling with a wrench. Reseal the tank and lid with a high heat silicone.

PLEASE NOTE: Each of these items serve as a simple suggestion when repairing your Jiffy® Steamer. To insure professional service, please send your unit to the plant for authorized personnel to repair the steamer. A user may experience decreased performance at higher altitudes.

Questions?

Call our technical support line

@ 1-800-525-4339 or 1-731-885-6690

or e-mail us at

jsinfo@jiffysteamer.com

Jiffy® Steamer Matrix Chart



Index

- A** = upholstery
- C** = carpet
- D** = drapery
- DM** = metal steam head for drapery
- H** = hat
- M** = metal steam head with wooden handle
- W** = wig



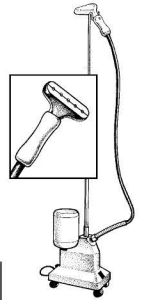
J-1



J-4000H



J-2

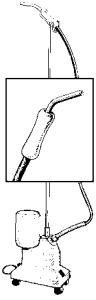


J-2M

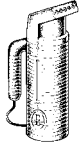
Commercial	Pro-Line			
Automotive				
Furniture			●	●
Hat Manufacturers	●	BEST		
Industrial Supply			●	●
Silk Floral Manufacturing			●	●
Hospitality			●	●
Retail				
• Clothing			●	●
• Mass Channel			●	●
Photography			●	●
Movie Production			●	●
Interior Designers				
• Drapes				
• Carpets				
• Wallpaper				
Cosmetics				
• Beauty Salons				
• Hair Replacement				
Rental Stores	●	●	●	●
Supply Houses	●	●	●	●
Consumer				
Clothing			●	BEST
Wallpaper				
Drapes			●	BEST
Furniture			●	BEST
Wigs			●	
Travel				

Jiffy® Steamer Company, LLC Shipping Address: 4462 Ken-Tenn Highway • Union City, Tennessee 38261 or Mailing Address:

Use this helpful matrix chart to help you find the right Jiffy® Steamer for your needs!



J-2W



Esteam®



**Jiffy® Steamer
Liquid Cleaner**

Mounting Options

Option A

Option B

Option C



Steamboard

The Steamboard and Liquid Cleaner

		<p>Jiffy® Steamer Liquid Cleaner is safe to remove hard water scale on all Jiffy® Steamer models.</p>	
			BEST
			BEST
			BEST
			BEST
			BEST
			BEST
			BEST
			BEST
			BEST
●			
●			BEST
●			BEST

	●	<p>Jiffy® Steamer Liquid Cleaner is safe to remove hard water scale on all Jiffy® Steamer models.</p>	BEST
BEST			
	BEST		

Jiffy Steamer Matrix Chart



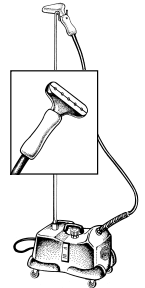
Each J-4000 model features a clear, built-in sight gauge. It allows you to view the water level in the boiler tank. It is also designed to indicate sediment build-up.

Index

- A = upholstery
- C = carpet
- D = drapery
- DM = metal steam head for drapery
- H = hat
- M = metal steam head with wooden handle
- W = wig



J-4000

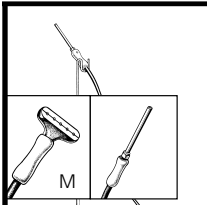
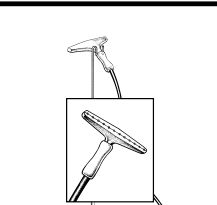
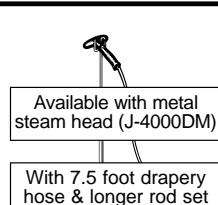
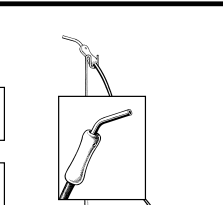


J-4000M

Commercial	Pro-Line	Pro-Line
Automotive		
Furniture	●	BEST
Hat Manufacturers		
Industrial Supply	●	BEST
Silk Floral Manufacturing	●	BEST
Hospitality	●	BEST
Retail		
• Clothing		BEST
• Mass Channel		BEST
Photography	●	BEST
Movie Production	●	BEST
Interior Designers		
• Drapes		
• Carpets		
• Wallpaper		
Cosmetics		
• Beauty Salons		
• Hair Replacement		
Rental Stores	BEST	BEST
Supply Houses	BEST	BEST
Consumer	Pro-Line	Pro-Line
Clothing		
Wallpaper		
Drapes		
Furniture		
Wigs		
Travel		

Jiffy® Steamer Company, LLC Shipping Address: 4462 Ken-Tenn Highway • Union City, Tennessee 38261 or Mailing Address:

Use this helpful matrix chart to help you find the right Jiffy® Steamer for your needs!

 <p>J-4000A</p> <p>Pro-Line</p>	 <p>J-4000C</p> <p>Pro-Line</p>	 <p>J-4000D</p> <p>Pro-Line</p>	 <p>J-4000W</p> <p>Pro-Line</p>
BEST			
BEST	BEST	BEST	
	BEST	BEST	
		●	
		●	
		BEST	
	BEST BEST		
			BEST BEST
BEST	BEST	BEST	BEST
BEST	BEST	BEST	BEST
	BEST		
		●	

Jiffy® Steamer PRODUCT SPECIFICATIONS



Worldwide Leader in
Steaming Equipment Since 1940

SPECIFICATIONS	ESTEAM®	J-1®	J-2®	J-200®	J-2000®	J-4000®
Voltage (120V)	✓	✓	✓	✓	✓	✓
Voltage (230V)	✓	✓	✓	✓	✓	✓
Wattage	600W (120V) 625W (230V)	1300W	1300W	1300W	1300W	1500W
Amps (120V)	5	10.83	10.83	10.83	10.83	12.5
Amps (230V)	2.71	5.65	5.65	5.65	5.65	6.52
Fusible Link Safety Fuse	✓	✓	✓	✓	✓	✓
Power Cord Length	8 feet	7 feet	7 feet	7 feet	7 feet	7 feet
Multiple Cord Plug Configurations Available	✓	✓	✓	✓	✓	✓
High Temperature Silicone Braided Wiring	✓	✓	✓	✓	✓	✓
Electrical Certifications (Both 120V and 230V)	UL, CSA, CE, NOM, ANCE	UL, CSA, CE, NOM, ANCE	UL, CSA, CE, NOM, ANCE	UL, CSA, CE, NOM, ANCE	UL, CSA, CE, NOM, ANCE	UL, CSA, CE, NOM, ANCE
Uses Ordinary Tap Water	✓	✓	✓	✓	✓	✓
Water Capacity	8 ounces	1 gallon	1 gallon	1 gallon	.75 gallons	1 gallon
Water Level Easily Viewed	✓	✓	✓	✓	✓	✓
Pre-Heat Time with Maximum Water	2 minutes	2 minutes	2 minutes	2 minutes	2 minutes	15 minutes
Steam Duration	16 minutes	2 hours	2 hours	2 hours	1 hour 30 minutes	2 hours
Hose Length	—	—	5.5 feet	5.5 feet	5.5 feet	5.5 feet or 7.5 feet
Stainless Steel Boiler Tank	—	—	—	—	—	✓
Heating Element Type	Die Cast in Aluminum	Die Cast in Brass	Die Cast in Brass	Die Cast in Brass	Die Cast in Brass	Incoloy
Die Cast Aluminum Housing	—	✓	✓	—	—	✓
Hose/Clothing Hanger	—	—	✓	✓	✓	✓
1 Year Limited Warranty	✓	✓	✓	✓	✓	✓
Made in the U.S.A.	✓	✓	✓	✓	✓	✓
Net Weight Assembled	2 pounds	12 pounds	15 pounds	13 pounds	14 pounds	22 pounds
Gross Packaged Weight	3 pounds	15 pounds	17 pounds	15 pounds	18 pounds	26 pounds
Assembled Dimensions (L x W x H)	5.75 x 3.25 x 10.5 inches	13.5 x 7.5 x 13 inches	13.5 x 7.5 x 64.5 inches	13.5 x 7.5 x 64.5 inches	15 x 10 x 64 inches	18.5 x 10.5 x 62 inches
Single Carton Dimensions (L x W x H)	11.25 x 5 x 6.5 inches	15 x 9 x 19 inches	15 x 9 x 19 inches	15 x 9 x 19 inches	18 x 11.5 x 15 inches	20.5 x 12 x 13.5 inches
Attachments Available <i>Attachments Legend:</i> A = Auto B = Steam Brush C = Carpet D = Drapery DM = Metal Head Drapery H = Hat M = Metal Head W = Wig	Voltage Converter (converts 230 voltage electrical current to 120 voltage)	B, H, M, W	B, H, M, W	B, H, M, W	B, H, M, W	A, B, C, D, DM, H, M, W



Comments? Questions?

Jiffy® Steamer Company Hotline 1-800-525-4339

Jiffy® Steamer Warranty



1 Year Limited Product Warranty

The Jiffy® Steamer is precision built, tested and inspected before leaving our factory. It is guaranteed against defects in material or workmanship for one year from date of purchase. Cords are excluded. If any part proves to be defective, this product will be repaired free of charge. A nominal handling fee does apply. This warranty shall not apply to any unit which has been subject to misuse, neglect, negligence or accidents. Such damage will be repaired at a nominal charge. **JIFFY® STEAMER COMPANY, LLC** shall not be responsible for any incidental, special or consequential damages. All implied warranties, including, but not limited to warranties of fitness and merchantability, are limited in duration to one year from date of original purchase. This warranty gives you specific legal rights, and you may have other rights, which vary from state to state. Some states do not allow the exclusion limitations on how long an implied warranty lasts, so the above limitations and exclusions may not apply to you. If your Jiffy® Steamer requires service in the warranty period, ship it to the corporate headquarter's address below, along with \$10.90 for return shipping and handling charges.

Return Policy

Jiffy® Steamer Company, LLC strives to manufacture the very best quality steamers available in the world today. In the event you find that our products do not meet your needs, you may return the unit in the original packaging materials, along with a copy of the purchase receipt to the following address:

Jiffy® Steamer Company, LLC • Attn: Returns Department
4462 Ken-Tenn Highway • Union City, Tennessee 38261 • USA
Phone: 1-731-885-6690 • Fax: 1-731-885-6692
Toll-Free: 1-800-525-4339

This return policy only applies to goods purchased directly from Jiffy® Steamer Company, LLC and is independent of other dealer return policies. Please note that we shall issue 100% merchandise credit if the unit is returned in new condition within 30 days of purchase. If the unit is returned in new condition outside this 30 day window, there shall be a 10% restocking fee assessed based on the invoice cost. Shipping charges are non-refundable under either of the above circumstances. Jiffy® Steamer Company, LLC reserves the right to refuse credit for discontinued products or steamers more than one (1) year past the date of purchase. If you have further questions regarding this, or any other issue, please do not hesitate to contact our customer service department at the above number. Thank you for your interest in Jiffy® Steamer products.

Jiffy® Steamer Extended Warranty

Extended Warranty Program

As a part of our growing family of valuable customers, you shall enjoy the sense of security that comes with knowing the Jiffy® Steamer product you purchased was built with precision, using the highest quality materials and workmanship available. This sense of security is reinforced by our standard one-year limited warranty coverage.

The standard warranty that came with your purchase expires 1 year from the purchase date and then you will be responsible for arranging and paying for your own repairs. Because we sincerely appreciate your purchase and hope to keep you as a satisfied customer for many years to come, our Jiffy® Steamer Extended Product Warranty is available for purchase. Please understand that the extended warranty must be purchased within 30 days of steamer purchase date. To find out more about this program, visit our web site at www.jiffysteamer.com or contact us directly (details below).

Contact Us

Jiffy® Steamer Company, LLC looks forward to serving your needs. If you have questions regarding our products, please do not hesitate to contact us.

Jiffy® Steamer Corporate Headquarters Information:

Shipping Address:

4462 Ken-Tenn Highway
Union City, Tennessee 38261
United States of America

Mailing Address:

P.O. Box 869
Union City, Tennessee 38281
United States of America

Toll-Free: 1-800-525-4339 (In North America)

Voice: 1-731-885-6690

Fax: 1-731-885-6692

Email: jsinfo@jiffysteamer.com

Web: www.jiffysteamer.com



If Service is Required

PLEASE DO NOT RETURN THIS APPLIANCE TO THE STORE WHERE IT WAS PURCHASED.

For information regarding product service, please call our Toll-Free number noted above. Our customer service hours are from 7:30 AM – 4:00 PM, Central Time Zone, Monday through Friday. Please have your model number, serial number, place of purchase, date of purchase and description of the problem available. All products serviced by our factory technicians carry a six (6) month warranty. Thank you and we look forward to serving your needs.

Thank You
for purchasing the original Jiffy® Steamer!